

Dell 2000FP Inverter Board Installation Instructions

The Dell 2000FP was designed for a wide variety of users ranging from the home, small office, or corporate environment. It utilizes a 20.1-inch (51.0cm) Active Matrix TFT LCD that displays sharp and brilliant images of text and graphics with a maximum resolution up to 1600 x 1200 pixels.

Common Problems associated with this model:

1. No Display (No Picture) on screen but Power Indicate light stays on green.
2. Screen Flickering.

Resolving these issues (Part Replacement): There are two types of Inverter Board:

1. Replace the inverter board T051023.00 with two of CCFL Output Connector is 14mm width.
2. Replace the inverter board T051023.02 with two of CCFL Output Connector is 22mm width.

This Inverter Board works on the following models:

BRAND	MODEL	REMARK
DELL	2000FP	20.1" LCD MONITOR

Disassembly Instructions:

1. Place monitor face down on flat surface using a soft towel to avoid scratching the LCD screen.
2. Use a cup or other small container to hold the screws as they are removed.
3. It is recommended, not required, that you purchase a static wrist guard or other anti-static guard. These can be purchased at a nominal cost at a computer hardware store or electronics repair shop.
4. Make sure the unit is unplugged and the power supply/plug is removed from the unit.
5. **Important:** Do not apply force onto the LCD screen at anytime, this will cause permanent damage.
6. This manual is provided as a reference guide. If you do not understand disassembly process or you do not feel that you are competent to perform the repair, then you should have the repair completed by a professional repair technician.

Disclaimer:

Norris Parts provides this manual for reference only. Norris Parts is not responsible for any actions taken by the user of this manual. Norris Parts is not responsible for damage resulting from the repair or use of any equipment referenced in this manual.

Disassembly



Step 1:

Remove the four (4) screws from the top of the base.



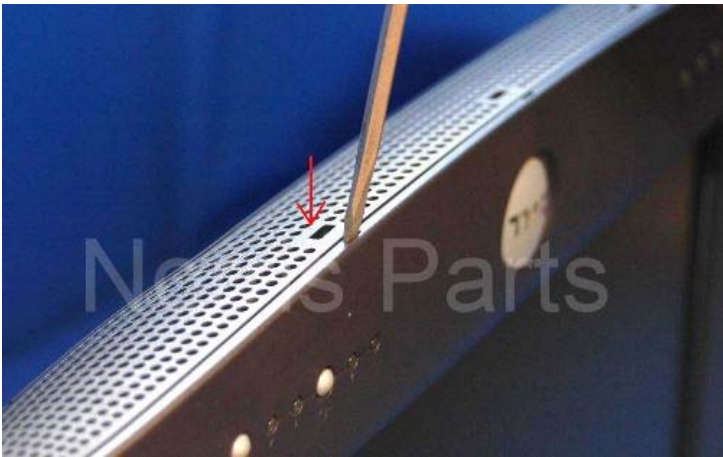
Step 2:

Remove the base.



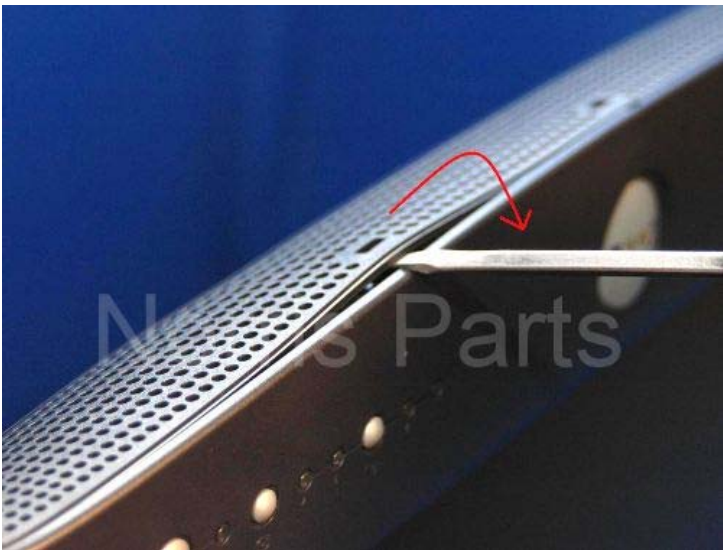
Step 3:

Remove the four (4) screws from the back cover.



Step 4:

Stick a flat screw driver between the back cover and the front bezel on the bottom of the LCD.



Step 5:

Remove the back cover from the bottom of the LCD.



Step 6:

Remove the back cover from the bottom of the LCD.



Step 7:

Rotate the LCD to the side to continue removing the back cover.



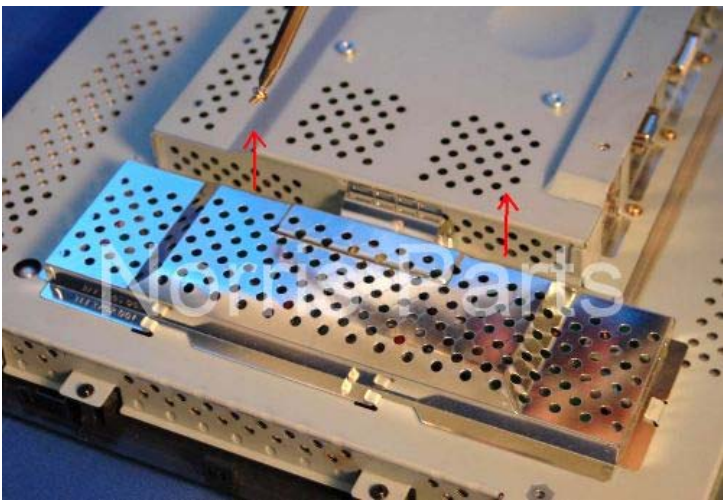
Step 8:

Rotate the LCD to the other side to continue removing the back cover.



Step 9:

Remove the back cover.



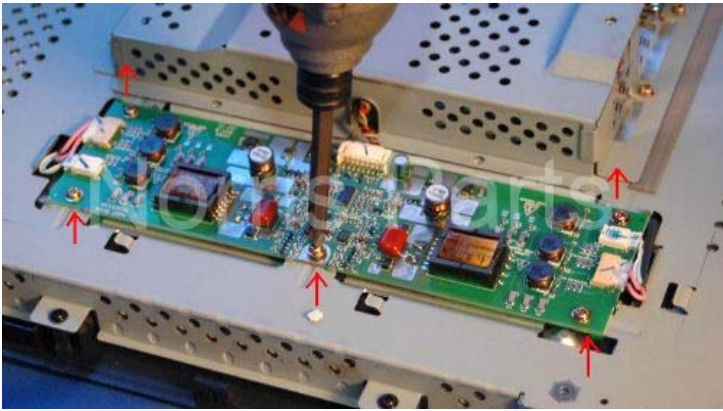
Step 10:

Remove the two (2) screws from the inverter board's metal cover.



Step 11:

Remove the inverter board's metal cover.



Step 12:

Remove the six (6) screws from the inverter board.



Step 13:

Unplug the two (2) connectors from the inverter board.



Step 14:

Remove the other two (2) connectors from the inverter board.

**Step 15:**

Unplug the last connector from the inverter board.

Step 16:

Remove the inverter board.

Step 17:

Inspect new part ensuring that any packing materials or tape are removed.

Step 18 – Reassembly

Follow the directions in reverse to complete the installation of the replacement part. Make sure that all connectors are plugged in. Make sure that you replace all screws into their assemblies.